



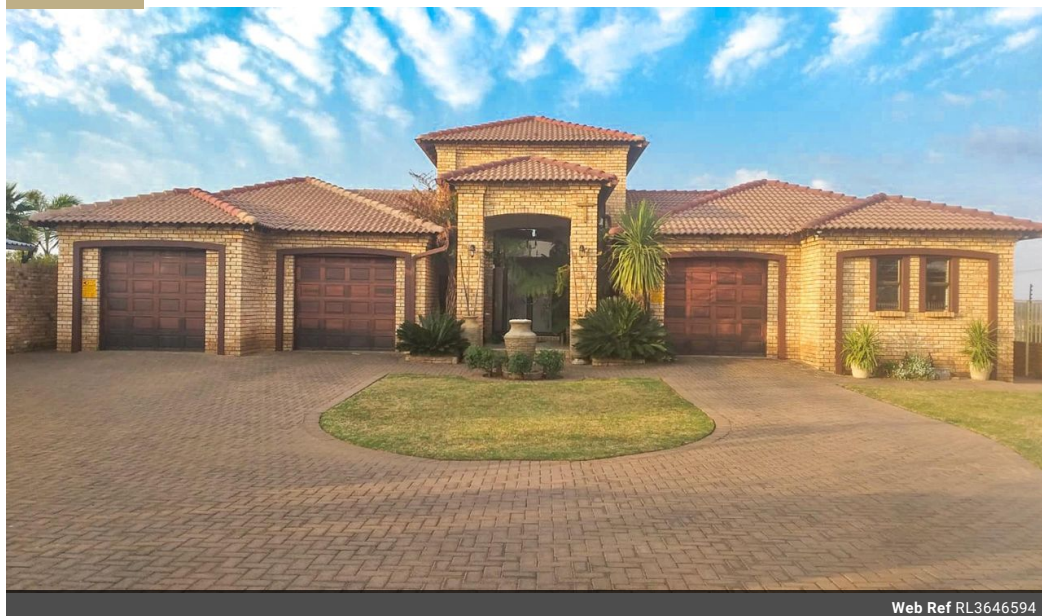
Gideon Naude
082 927 3397
gideon.naude@century21.co.za

Contact Potchefstroom

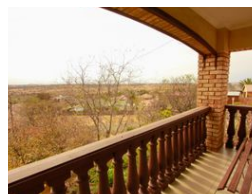
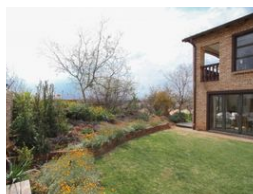
018 100 0036

61 Steve Biko street
Die Bult
Potchefstroom
Cachet Park
Shop 7

UNDER OFFER



Web Ref RL3646594



R2,295,000

3 2 2

Monthly Bond Repayment R24,871.08

Calculated over 20 years at 11.75% with no deposit.

Transfer Costs R110,551.00 **Bond Costs** R42,713.50

These calculations are only a guide. Please ask your conveyancer for exact calculations.

Monthly Rates R1,050

Move in Ready Family Home.

This well maintained, beautiful 3 bedroom house has everything you've been looking for in a house and is ready for moving in. This property is situated on a hill with a nice panoramic view of the surroundings.

The sunny master bedroom has a un-suite bathroom and ample cupboards. The kitchen is furnished with a lovely modular kitchen from Milestone Kitchens and the free-standing 90cm ELBA stove is a dream for any cook. The 4 gas burners will help you reduce your electricity bill and you will be able to prepare food during load shedding.

There is a large laundry situated next to the garage closest to the kitchen. The entertainment areas are situated in the middle of the house. On the one side are the kitchen, master bedroom and 1 garage. On the other side you will find 2 sunny bedrooms, a bathroom, and a double garage. On...

Features

Interior

| | |
|-----------|-------|
| Bedrooms | 3 |
| Bathrooms | 2 |
| Kitchens | 1 |
| Studies | 1 |
| Furnished | False |

Exterior

| | |
|---------|----|
| Garages | 2 |
| Pool | No |

Sizes

| | |
|------------|---------------------|
| Floor Size | 290m ² |
| Land Size | 1,010m ² |

