



**Sheilla Mashishi**  
073 026 0231  
sheilla.mashishi@century21.co.za

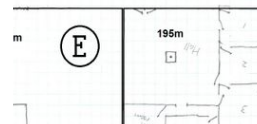
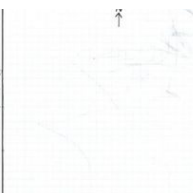
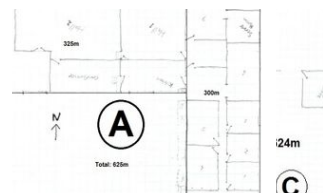
Contact Polokwane

**015 880 2111**

Office 1 - Kleen Place,  
215 Harley St - Eduan Park,  
Polokwane,  
0699

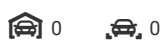


Web Ref POL-CR00009



**R16 per m<sup>2</sup>**

**Gross Monthly Rental R89,200 Excl. VAT**



### Commercial Office Space and Storage To Let

This Property has everything to offer as a commercial renting space and will most certainly tick-off all your boxes. Ample space for storage, ample space for offices and can serve as a training center as well. The office/storage space consist out of five sections, namely Block A,B,C,D and E. The prices for rent are respectively as follows:

BLOCK A: R44 600-00

BLOCK B: R13 950-00

BLOCK C: R16 730.00

BLOCK D: R11 150-00

BLOCK E: R22 300-00

### Features

**Zoning** Commercial

#### Interior

Air Conditioning Yes

#### Sizes

Land Size 5,598m<sup>2</sup>