



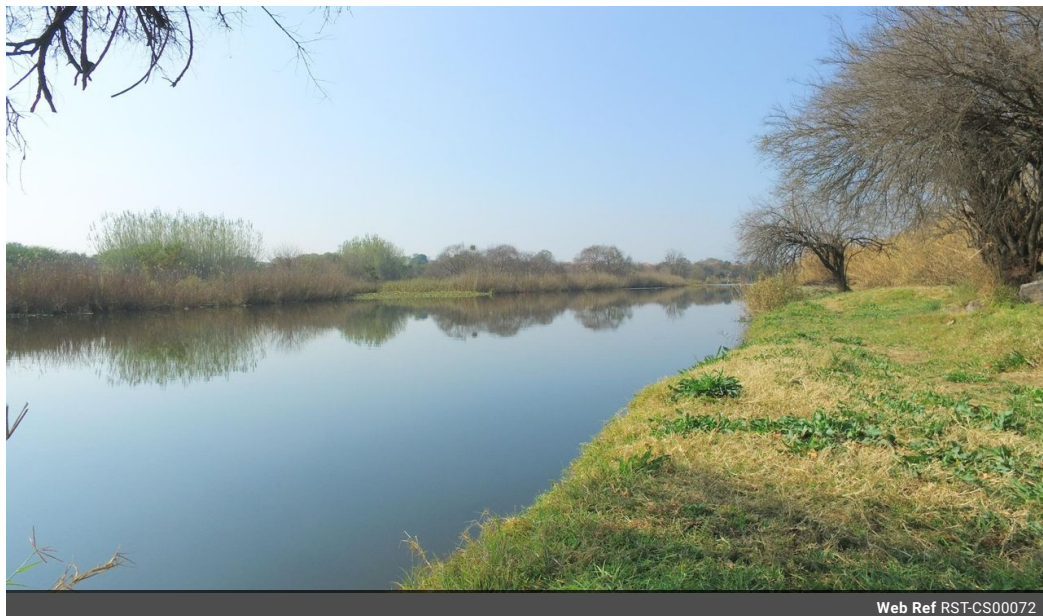
Martin Schultz

084 958 4740
martin.schultz@century21.co.za

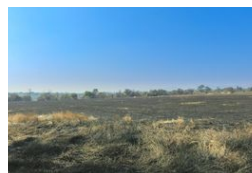
Contact Rustenburg

014 592 1629

261 Beyers Naude Drive
Rustenburg
0300



Web Ref RST-CS00072



R14,000,000

Prime 22ha Development Land with River Frontage - Ideal for a Prestigious Estate

Welcome to the prime opportunity of a lifetime! We present to you a 22-hectare development land, nestled just outside the vibrant town of Brits, North West. Embraced by the serene beauty of nature, this property is a true gem that borders on the picturesque Crocodile River, offering a serene and idyllic setting for your ambitious development dreams.

Set within a strategic location, this expansive land parcel is already zoned for Residential 2 and Business rights, offering a versatile canvas for an array of development ventures. Moreover, a dedicated section boasts zoning for a fueling station, enhancing the prospect of a multi-faceted, income-generating development.

The location could not be more optimal, as this development land is conveniently located just minutes away from the N4 Bakwena

Features